

About the Airport Master Plan



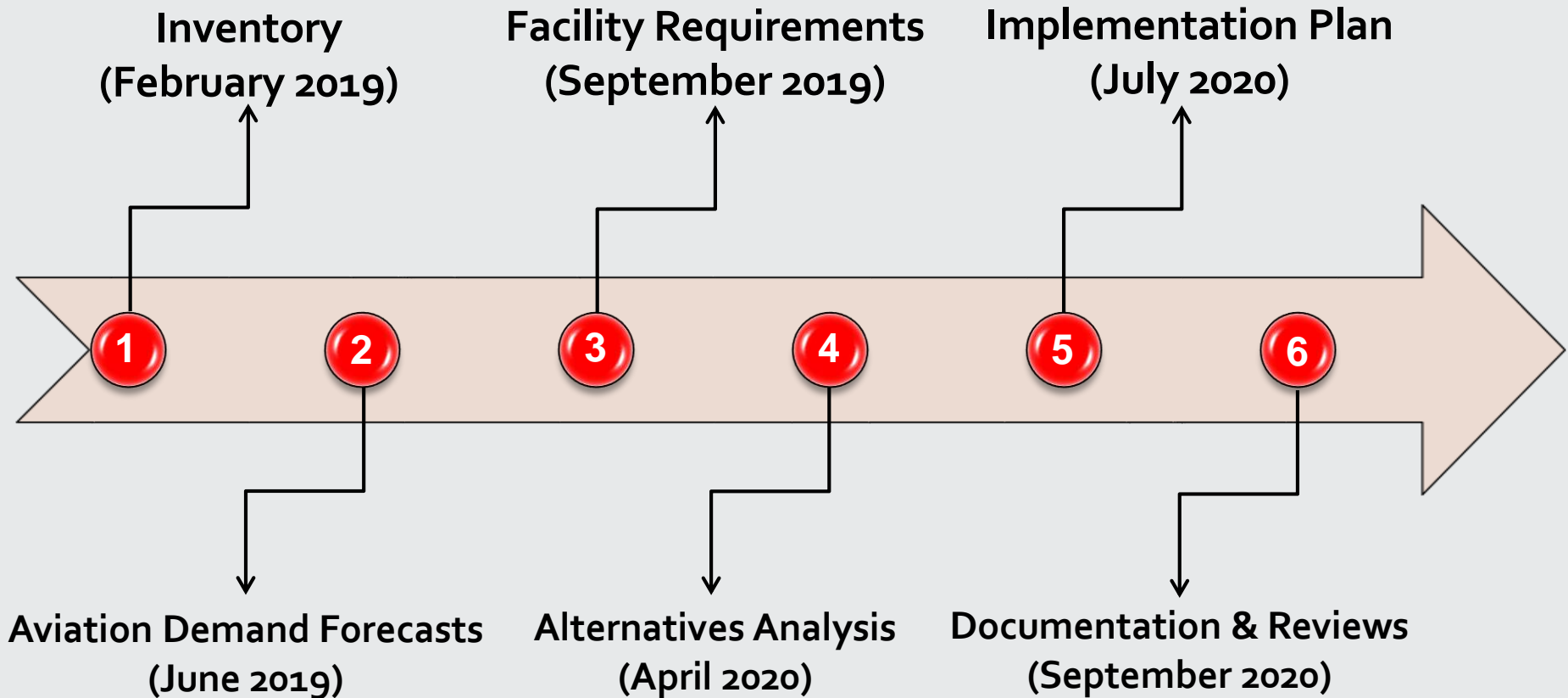
- ➔ An airport master plan is a comprehensive study of an airport describing development plans to meet future aviation demand
- ➔ Previous studies did not fully document non-standard conditions and actions needed to achieve compliance
- ➔ The airport owner (City of Portage) has an obligation to maintain a safe airport
- ➔ An updated study is needed to:
 1. Document non-standard conditions
 2. Review viability of the existing airport site to meet aviation demand and facility requirements
 3. Allow the airport sponsor to make an informed decision on future investment in the airport

Study Objectives



- ➔ Identify aviation demand and facility requirements in the Portage area
- ➔ Document deficiencies to airport design standards
- ➔ Review feasibility of achieving compliance with facility needs, including options and costs
- ➔ Develop consensus with local stakeholders on understanding key airport planning challenges
- ➔ Develop a decision-making document to allow the city to determine the future of the airport
- ➔ Obtain FAA and State agency feedback
- ➔ Provide the framework for future studies and actions to meet facility needs

Study Steps & Schedule



***Schedule subject to change based on review timelines*

Public Involvement



→ Provide Feedback

- Fill out a comment card for the study team
- Submit a comment on project website

→ Stay Engaged

- Please visit **www.portageairportplan.tkda.com** for study documents and updates

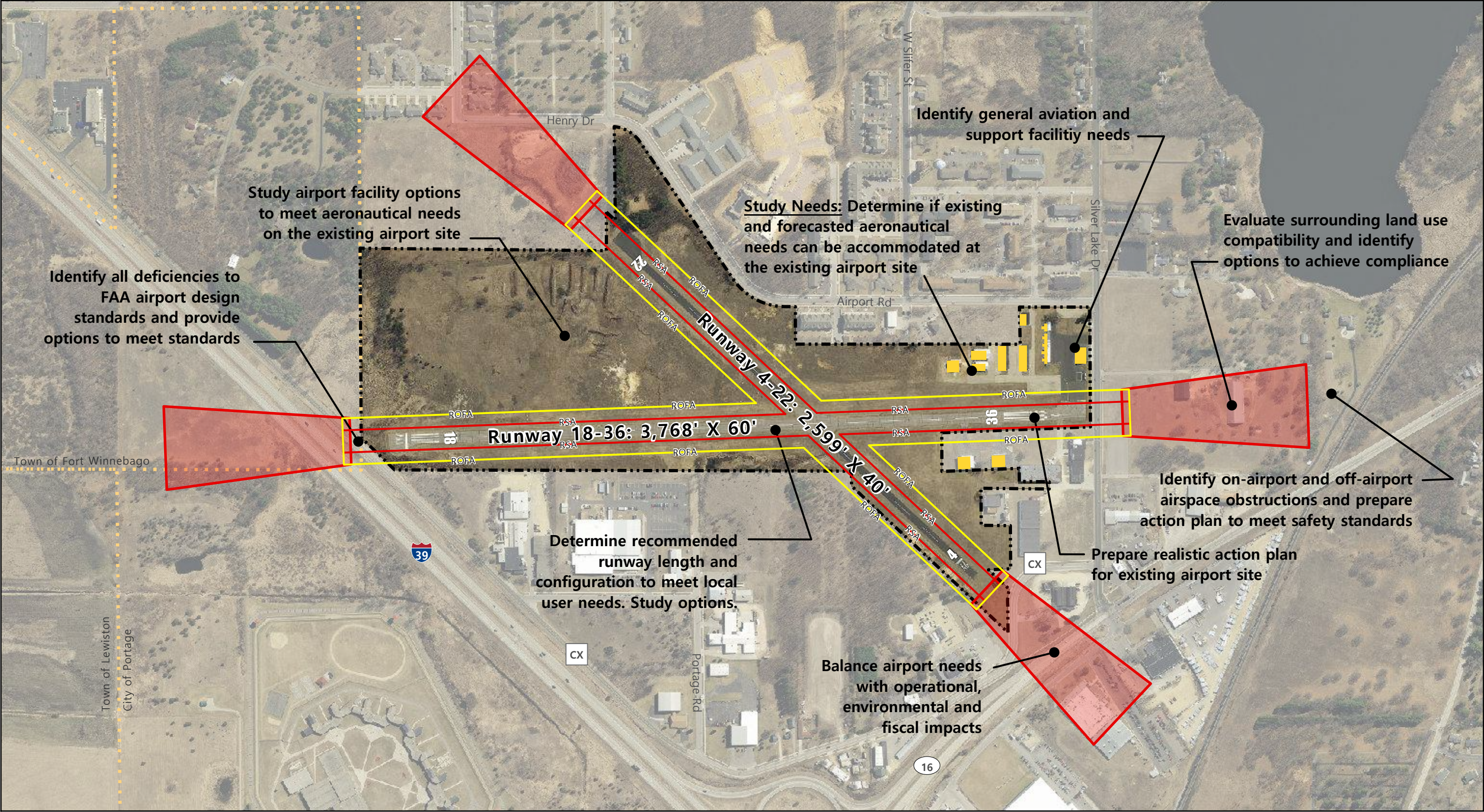
→ Strategies

- Technical Advisory Committee
- Open House Meetings
- Community Meetings
- Digital Content



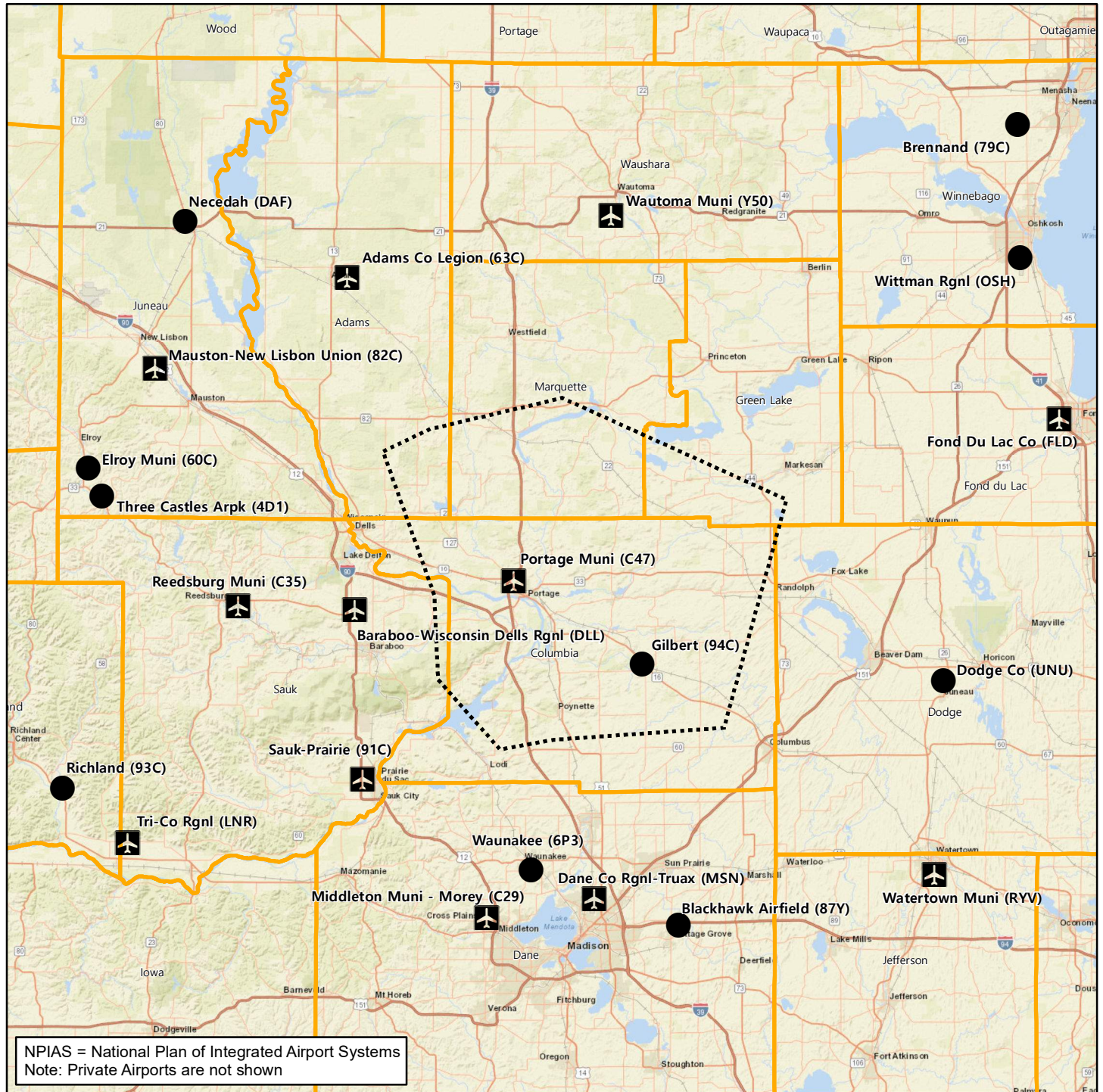
PORTAGE MUNICIPAL AIRPORT

Planning Considerations Map



PORTAGE MUNICIPAL AIRPORT

Airport Service Area



- Non-NPIAS, Public Use Airports
- ✈ NPIAS Airports
- Service Zone (Estimated)
- County Boundaries



**Engineering
Architecture
Planning**
TKDA
444 Cedar Street, Suite 1500
Saint Paul, MN 55101
651.292.4400
tkda.com

Data Sources: FAA, WI DNR

Building Area Facilities



Airfield Facilities

