

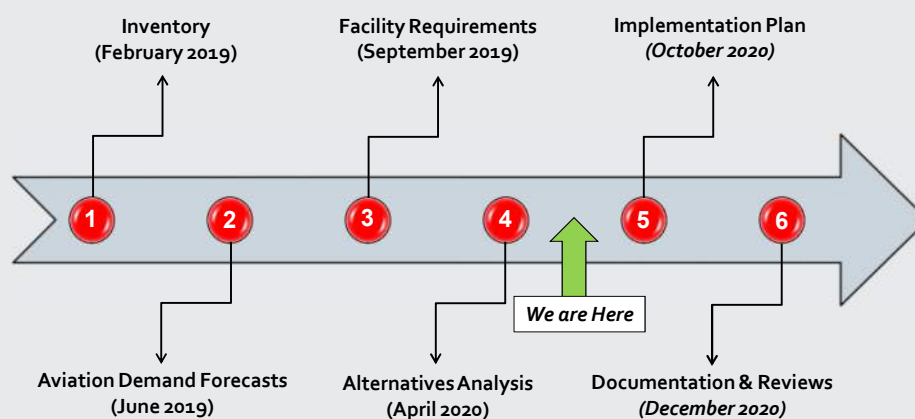


Airport Master Plan Study Goals

1. Document non-standard airport conditions.
2. Review viability of the existing airport site to meet aviation demand and facility requirements.
3. Allow the City of Portage to make an informed decision on future investment at the airport.



Current Project Schedule







***Schedule subject to change based on review timelines*



Facility Needs Summary

→ Planning Activity Levels (PAL)

Metric	Existing	PAL 2	PAL 3	PAL 4
Forecast Type	-	Constrained	Unconstrained	Unconstrained
Forecast Year	2018	2038	2023	2038
Annual Operations	3,788	4,255	9,740	10,955
Based Aircraft	25	28	37	40
FAA Design Standards	A-I, Small	B-I, Small	B-II, Small	B-II, Large Business Jet
Critical Aircraft				
Primary Runway Dimensions	3,768' x 60'	3,300' x 60'	3,800' x 75'	5,500' x 75'



Airfield Alternatives

- Eight (8) on-site airfield “build” development options were developed
- Criteria was to meet FAA design standards and facility needs for various activity scenarios:
 - **3,300' Runway (PAL 2)**
 - 3,800' Runway (PAL 3)
 - 5,500' Runway (PAL 4)
- A planning-level impacts evaluation was completed for each option for comparative purposes
- After TAC and Agency feedback, the most feasible alternatives meet up to **PAL 2** requirements
 - Three (3) short-list options

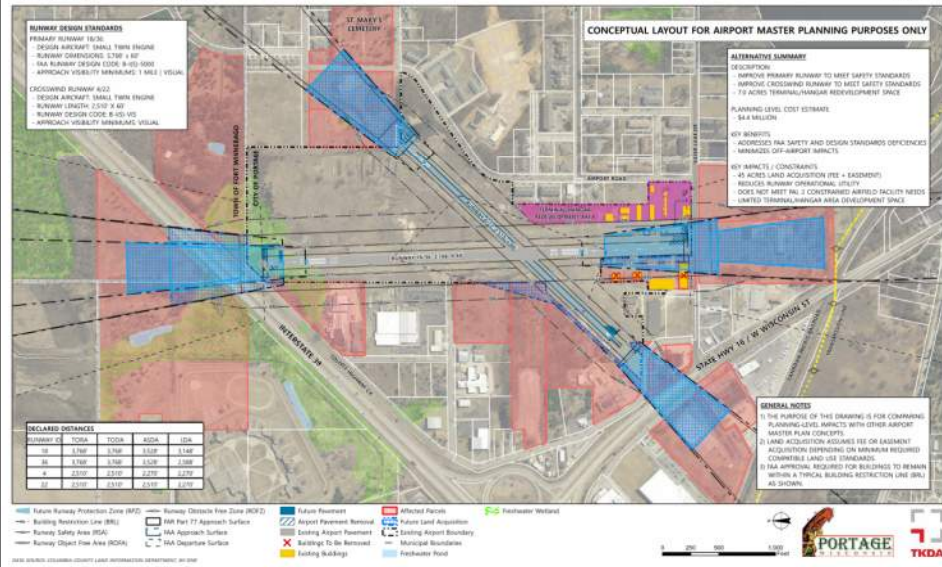


Alternative 1A: Safety & Compliance

Total Estimated Cost: \$4.4 million

FIGURE 5-1: ALTERNATIVE 1A - SAFETY & COMPLIANCE
PORTAGE MUNICIPAL AIRPORT (C47)

MASTER PLAN STUDY
PORTAGE, WI

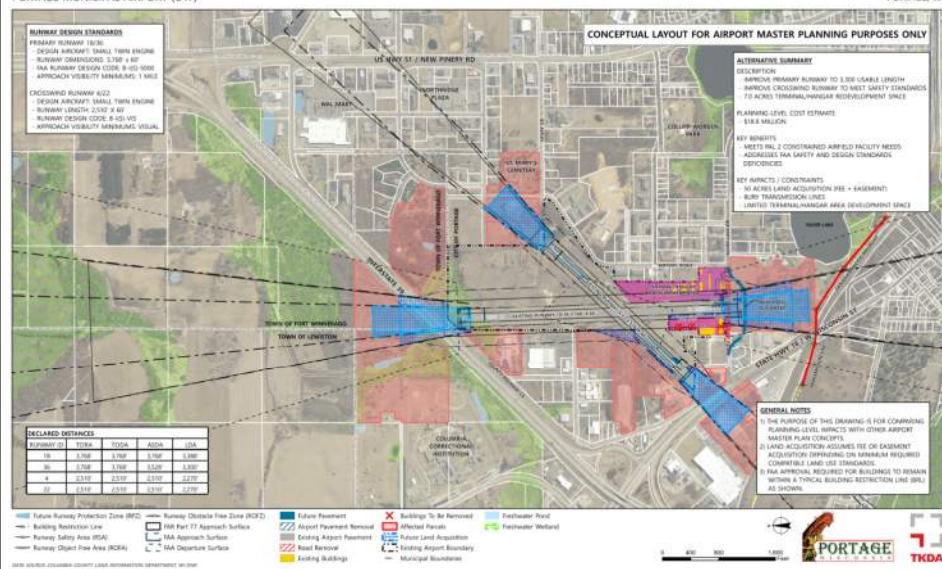


Alternative 2A: Improve Runway 18/36 to 3,300'

Total Estimated Cost: \$18.8 million

FIGURE 5-2: ALTERNATIVE 2A - IMPROVE RUNWAY 18/36 TO 3,300 FEET USABLE LENGTH
PORTAGE MUNICIPAL AIRPORT (C47)

MASTER PLAN STUDY
PORTAGE, WI

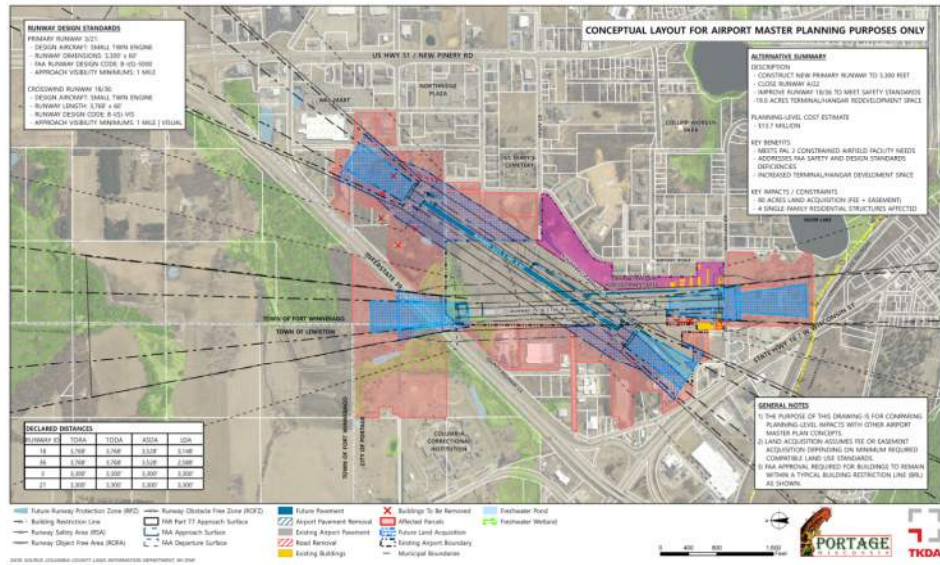


Alternative 2C: Construct New 3,300' Runway

Total Estimated Cost: \$13.6 million

FIGURE 5-4: ALTERNATIVE 2C - CONSTRUCT NEW RUNWAY TO 3,300 FEET
PORTAGE MUNICIPAL AIRPORT (C47)

MASTER PLAN STUDY
PORTAGE, WI



Airfield Alternatives Analysis

➔ The TAC's consensus is that **Alternative 1A** best satisfies the aeronautical needs at the existing airport site considering operational, environmental, and fiscal impacts.

Key considerations:

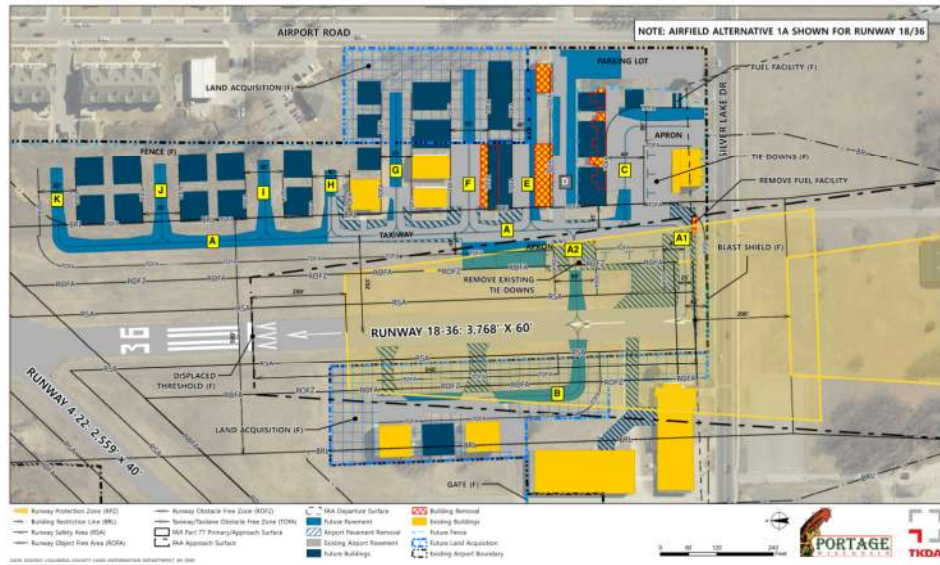
- ➔ **Fewest off-airport impacts and lowest cost** of "build" alternatives to meet basic airport safety needs.
- ➔ Heavily weighted impacts to landowners surrounding the airport and local share cost.
- ➔ **Decreases airport utility** by reducing usable runway length and eliminating instrument approaches – tradeoff.
- ➔ **Interim solution** while a new airport site is explored.
- ➔ Terminal/Hangar area concept compatible with Alternative 1A.



Terminal/Hangar Area Development Concept

FIGURE 5-10: PREFERRED TERMINAL / HANGAR AREA ALTERNATIVE
PORTAGE MUNICIPAL AIRPORT (C47)

MASTER PLAN STUDY
PORTAGE, WI



Future of the Portage Municipal Airport

City of Portage Decision

→ Improve the Existing Airport Site

- Focus of current study alternatives

→ Move the Airport to a New Site

- Requires new studies, approvals, etc.

→ Close the Current Airport

- Requires WBOA management and FAA Headquarters approval



Public Involvement

- Public input is important for local decision making
- Visit with study team and ask questions
- Provide written feedback for the project record
 - Complete a Comment Card
 - Submit comment online on the Project Website
 - Comment period open through October 13, 2020
- Visit **www.portageairportplan.tkda.com** for study documents and updates



Study Next Steps

- Review Public Comments
- Technical Advisory Committee Meeting #4
 - Recommend preferred study alternative
- Local Approval of Airport Plan
 - Airport Commission
 - Common Council
- Complete Study Documentation
- Adopt Airport Master Plan Study



Questions & Answers

**Portage Municipal Airport
Airport Master Plan – Phase 1
Public Open House #2**

September 29, 2020

